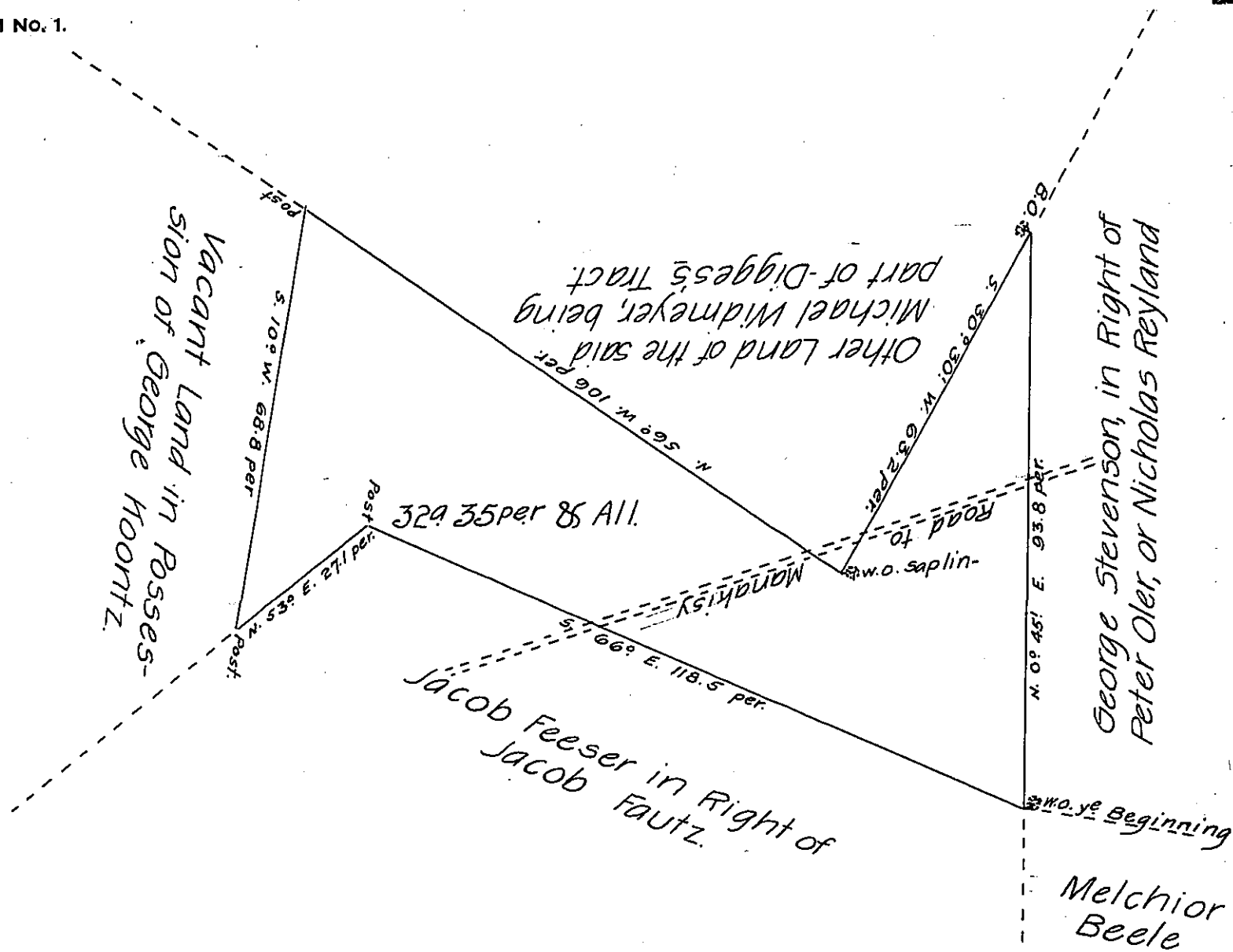


FORM No. 1.



Draught of a Tract of Land situate in Germany Township, York County. Containing Thirty Two Acres and Thirty five Perches & Allowance of Six Acres Per Cent. Surveyed to Michael Widmeyer by the Name of Michael Wilman. (In Pursuance of a Warrant bearing Date the 31st Day of May 1762) The 28th Day of August 1765.
 pr Arch^d M^c Clean, D.S.
 To John Lukens, Surveyor General.

IN TESTIMONY that the above is a copy of the original remaining on file in the Department of Internal Affairs of Pennsylvania, made conformably to an Act of Assembly approved the 16th day of February 1833, I have hereunto set my hand and caused the Seal of said Department to be affixed at Harrisburg, this eighth day of July 1907

Henry Howell
 Secretary of Internal Affairs.